

CERTIFICATE OF LOCATION OF GOVERNMENT CORNER

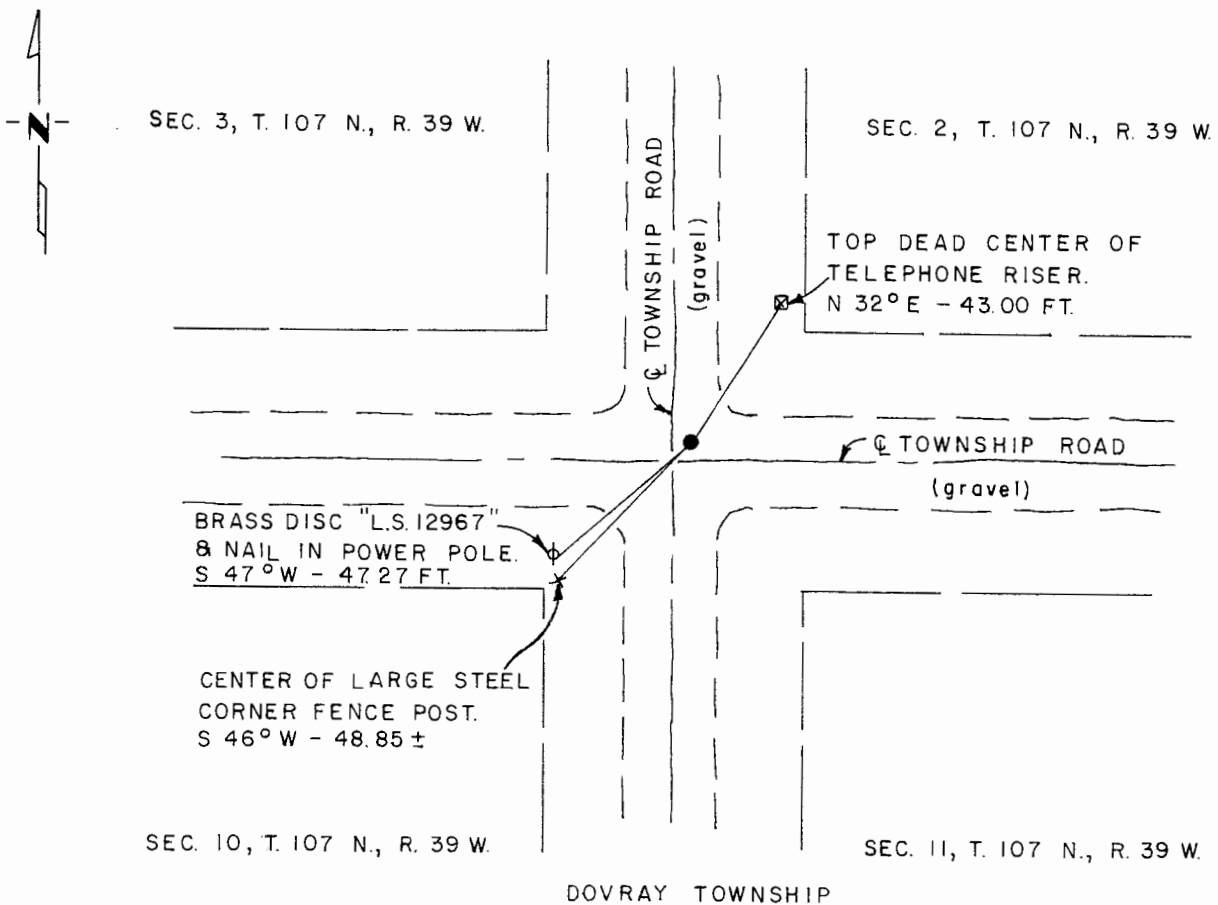
Southeast Corner of Section 3, Township 107 N., Range 39 W., 5th P.M.

STATE OF MINNESOTA, County of Murray

At the corner location shown on the sketch:

- On Oct. 9, 1980 found a field stone 2.6' below grade; stone was 3.0' N. & 2.8' E.
DATE
of the intersection both Township Road centerlines.
 - left monument as found, lowered monument, removed monument (explain)
- On Oct. 9, 1980 placed a 1/2" iron reinforcing bar set with "L.S. 12967" cap
DATE
above the stone

SKETCH OF REFERENCE TIES



I hereby certify that this document and the data contained herein was prepared by me or under my direct supervision.

Ray S. Mat 12/28/81
SIGNATURE DATE

Registration No. 12967

- Land Surveyor, Professional Engineer
- County Surveyor, County Engineer

OFFICE OF THE COUNTY RECORDER
 County of Murray

I hereby certify that this document was filed in the Co. Recorders office at 10 A.M. on the 18th day of February A.D. 1982

County Recorder Willard W. Orme

By _____, Deputy

DOCUMENT NO. _____